



Situation as of 23/08/2023 09:19 UTC
 Delineation MONIT02 - Overview map 01



Active Flames 40 No
Fire Fronts 13.6 km
Burnt area 72,344.5 ha

Potentially affected population ~ 3100

Potentially Affected Built-up and Transportations

Railway 33.1 km **Road 1,500.6 km** **Built-Up 103.3 ha**

- Crisis Information**
- Active Flames
 - Fire Fronts
 - Burnt area
 - Area of Interest
 - Administrative boundaries
 - Built-Up Area
 - Residential
 - Non residential
 - School, university and research buildings
 - Hospital or institutional care buildings
 - Military
 - Hydrography
 - Coastline
 - River
 - Stream
 - Lake
 - Land Subject to Inundation
 - Open Water
 - Reservoir
 - River
 - Facilities
 - Long-distance pipelines or lines
 - Local pipelines or lines
 - Dam
 - Power plant
 - Sport and recreation constructions
 - Dam
 - Transportation
 - Highway
 - Main road
 - Local road
 - Track
 - Railway
 - Airfield runway
 - Airfield
 - Helipad

	Current	Forecast	
	23 August 09:19 UTC	24 August 09:19 UTC	25 August 09:25 UTC
Wind direction and speed	24 km/h	15 km/h	19 km/h
Temperature and relative Humidity	28° 51%	27° 49%	30° 45%

Data retrieved from ECMWF on August 23, 09:19 UTC. Calculated at: 40.87194°N, 25.99750°E

Event:
 A wildfire that started on Saturday, the 19th of August early in the morning (04:49 local time) in a forest area near Aristino village (East Macedonia and Thrace Region) is ongoing. Residents of the villages Aristino, Loutros, Agnadia, Antheia and Doriko were ordered to evacuate. Copernicus EMS Rapid Mapping is requested to provide fire extent and damage assessment emergency mapping.

Data sources and analysis:
 Pre-event image: Sentinel-2A/B (2023) (acquired on 29/07/2023 at 09:05 UTC, resolution 10 m).
 Post-event image: WorldView-2 © Maxar Technologies, Inc. (2023), (acquired on 23/08/2023 at 09:19 UTC, resolution 2.0 m). This image was used as background image.
 All images are provided under COPERNICUS by the European Union and ESA, all rights reserved.

Base vector layers: OpenStreetMap © OpenStreetMap contributors (2023), Wikimapia.org, GeoNames 2015, Corine Land Cover (CLC) 2018, EuroBoundaryMap 2017 © EuroGeographics.

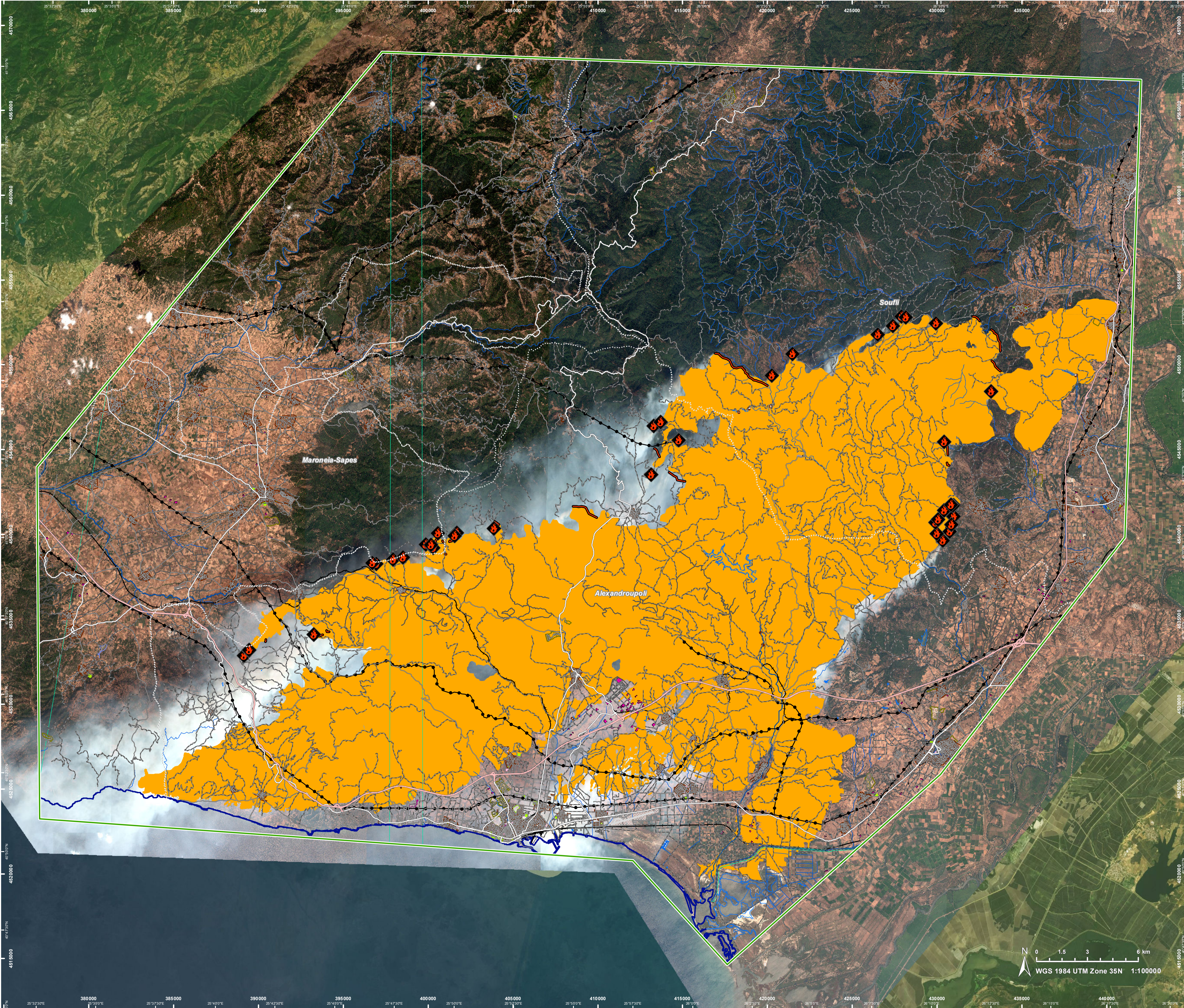
Inset maps: JRC 2013, GISCO 2010 © EuroGeographics, Natural Earth 2012, CCM River DB © EUJRC2007, GeoNames 2015.

Population data: GHS Population Grid © European Commission, 2023 https://ghsl.jrc.ec.europa.eu/ghs_pop2023.php

The thematic layer has been derived from post-event satellite image by means of visual interpretation. Due to dense smoke, the burnt area delineation is not complete. The current burnt area cumulates all burnt area extents from previous post-event products.

Disclaimer: Full disclaimer and other helpful information available in the online manual: <https://emergency.copernicus.eu/mapping/ems/online-manual-rapid-mapping-products>.

Map produced by GAF AG released by e-GEOS on the 23/08/2023.
 Details on this activation and service conditions available through the QR code or at the link: <https://rapidmapping.emergency.copernicus.eu/EMSR686/download>



0 1.5 3 6 km
 WGS 1984 UTM Zone 35N 1:100000

Consequences within the AOI				
		Unit of measurement	Affected	Total in AOI
Burnt area		ha		72,344.5
Active Flames		No.		40
Fire Fronts		km		13.6
Estimated population	Number of inhabitants		~ 3,100	~ 95,000
Built-up	Residential Buildings	ha	49.2	2,105.0
	Office buildings	ha	0.0	0.9
	Wholesale and retail trade buildings	ha	0.0	2.8
	Industrial buildings	ha	12.5	264.4
	School, university and research buildings	ha	0.3	18.8
	Hospital or institutional care buildings	ha	0.5	13.7
	Military	ha	40.2	505.5
	Cemetery	ha	0.7	24.3
Transportation	Airfield runways	ha	0.0	160.9
	Helipad	ha	0.0	0.2
	Airfield runways	km	0.0	3.3
	Highways	km	47.3	192.3
	Primary Road	km	11.9	99.8
	Secondary Road	km	18.8	184.1
	Local Road	km	151.7	1,630.4
	Cart Track	km	1,270.9	4,523.9
	Long-distance railways	km	33.1	126.1
Facilities	Dams	ha	0.0	0.1
	Power plant constructions	ha	26.0	112.6
	Sport and recreation constructions	ha	1.9	51.7
	Long-distance pipelines, communication and electricity lines	km	56.5	319.5
	Local pipelines and cables	km	0.0	0.4
	Dams	km	0.4	0.5
Land use	Forests	ha	29,538.9	92,197.5
	Shrub and/or herbaceous vegetation association	ha	28,024.6	72,104.1
	Heterogeneous agricultural areas	ha	7,013.2	24,999.9
	Arable land	ha	5,386.8	55,779.1
	Other	ha	1,011.1	11,654.0
	Permanent crops	ha	924.3	1,910.7
	Pastures	ha	357.3	1,556.9
	Coastal wetlands	ha	63.8	1,557.2
	Open spaces with little or no vegetation	ha	0.0	768.3
	Inland wetlands	ha	0.0	39.1

Disclaimer:

Full disclaimer and other helpful information available in the online manual:
<https://emergency.copernicus.eu/mapping/ems/online-manual-rapid-mapping-products>
 © European Union / Copernicus Emergency Management Service

Data access:

All data displayed on the map(s), as well as Land Use - Land Cover layer(s), are available in the Crisis Information Package and the Base Layer Package (for reference data). The table above is available in editable format in the Crisis Information Package. All products and data are also available for download on the portal.

Access to the portal



PROGRAMME OF THE EUROPEAN UNION

